



**SOUTHEND
Safeguarding
Partnership**

Strategy

2020 - 2023

*Floor 6
Southend Borough Council,
Civic Centre,
Victoria Avenue,
Southend on Sea
SS2 6ER*

Who we are and what we do



WHO WE ARE

Southend Safeguarding Partnership is led by the three Strategic Partners.

- Essex Police
- Southend Clinical Commissioning Group
- Southend Borough Council

Organisations and individuals from all sectors that support vulnerable people in Southend make up our Partnership.

WHAT WE DO

We are the key statutory mechanism for agreeing how Partners co-operate to safeguard and promote the welfare of people in Southend; and for ensuring the effectiveness of what they do.

We do this for Children and Vulnerable Adults.

The Southend Safeguarding Partnership arrangements, as previously agreed, are to be evaluated a year into operation (October 2020). This Strategy will be reviewed as part of this process

This Strategy will also be reviewed annually

VISION

Southend Safeguarding Partnership prevent Children, Young People and Vulnerable Adults in our community from experiencing harm or exploitation; and intervene where and when appropriate if this does occur.

MISSION

- To create opportunity for Partners to work together
- To develop trust in the Partnership; so that we can help each other to find better ways of doing what we do.
- To ensure Partners work together to reduce the causes of harm to our communities
- To act as a critical friend and to highlight areas needing improvement
- To make sure that Partners understand what each other's priorities are and where there are overlaps
- To make sure everyone is safe and gets the help they need.

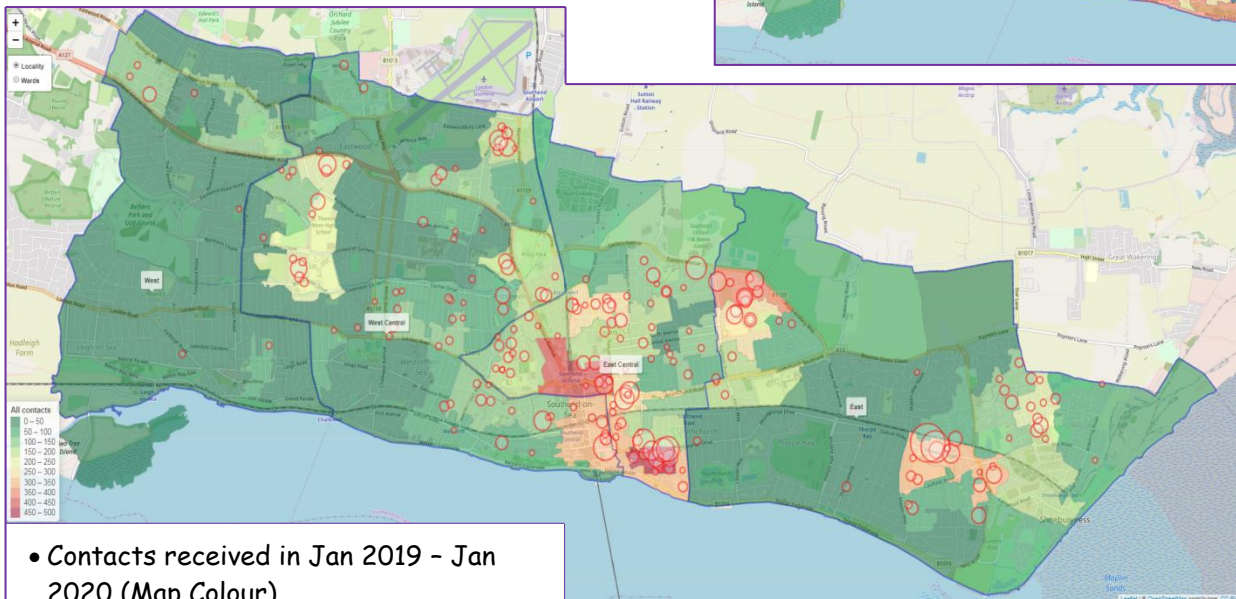
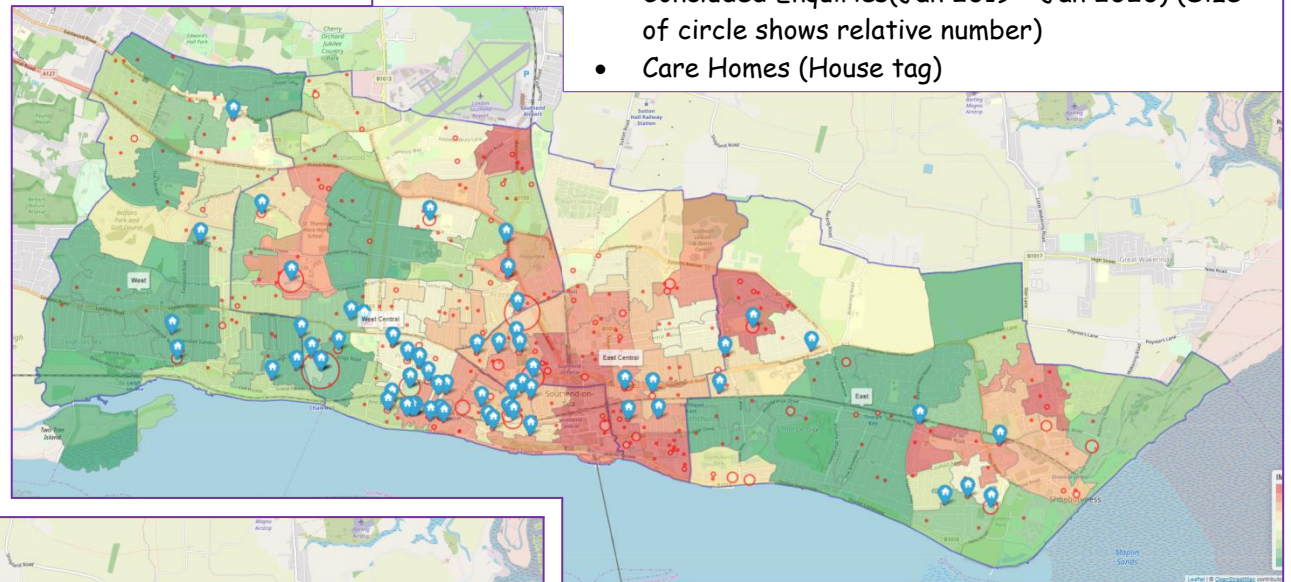


What's going on in Southend?



Adults

- Indices of Multiple Deprivation (Map Colour)
- Concluded Enquiries (Jan 2019 - Jan 2020) (Size of circle shows relative number)
- Care Homes (House tag)



- Contacts received in Jan 2019 - Jan 2020 (Map Colour)
- Referrals resulting in SSWA (Size of Circle shows relative number)

Children

	Southend on Sea	England
Population (2016)	181k	55,268k
Projected Population (2020)	186k	56,705k
% under 18	21.5%	21.3%
% 65+	19.1%	17.9%
% from ethnic minority	7.1%	13.6%



What are we doing?



- In 2019/20 we reviewed the way we managed the Partnership. As a result we have reshaped our meetings and their work. We are confident that we have the information and Partners we need to take forward Safeguarding issues in Southend.
- The Partnership is embedded in the priority work of Southend, Essex and Thurrock; ensuring we operate in such a way that supports people moving in and out of our respective areas.
- Partners manage many safeguarding referrals in a number of formats and in many forums.

<i>Southend Borough Council Figures</i>	2018/19
Safeguarding concerns (adults)	1350
Rate of safeguarding concerns (adults) (per 100,000)	944.6
Safeguarding enquiries (adults)	760
Rate of safeguarding enquiries (adults) (per 100,000)	531.8
Rate of referrals to children's social care (per 10,000)	544.5
Rate of child protection plans (per 10,000)	52.4
Rate of child in need (CIN, CP, LAC) (per 10,000)	359.1

- Current issues are raised within Partnership forums and together we assess risk, current provision of services and potential for improvement.

How this Strategy was developed

In developing this Strategy Partners organisational strategy, aims and objectives, their assessment of their own 'safeguarding' performance and the performance of the Partnership were reviewed. It has also been exposed to service users through Partner forums and agreed by all parties as the most appropriate way forward.

If you would like to see a version of this Strategy that includes more detail (including evidence of research that directed priorities) contact us at SSPA@southend.gov.uk or 01702 534706.



Priorities



PARTNERSHIP PRIORITIES

1. Ensure all Partners (Public, Private, Third Sectors and our Communities) have an opportunity to engage in working together and keeping people in Southend safe from harm and abuse.
2. Support communication between partners; ensuring vulnerable people have the information they need. (incl. data and information sharing)
3. Make arrangements that facilitate shared management of risk and delivery of services.
4. Create opportunity to build professional relationships and encourage Partners to work together to meet complex needs.
5. Make sure all practitioners and managers have the appropriate skills, competencies and training to fulfil their role; and are selected appropriately.
6. Ensure Partners learn from case reviews, organisational assessments and published guidance.

VULNERABLE ADULT PRIORITIES

1. Domestic Violence - work with Partners to ensure safeguarding is in place and victims, perpetrators and families can access support they need.

CHILDREN PRIORITIES

1. Ensure Partners develop their understanding of Harmful Sexual Behavior and put in place appropriate measures to protect victims.
2. Develop Partners ability to keep people safe on-line.

ADULTS AND CHILDRENS SHARED PRIORITIES

1. Neglect - promote the understanding of the issue.
2. Prevention - work with Partners to identify and reduce the cause of harm and abuse.
3. Ensure Partners hear the voice of the child/victim and think of the impact of abuse on the wider community (including family and close relationships)
4. Ensure that Partners have the tools and forums to discuss complex needs and the facility to manage any internal conflict.
5. Ensure that any change or new guidance is considered and implemented with the victim at the center of its thinking
6. Ensure we develop the professional curiosity of practitioners.
7. Highlight the importance of reporting and recording accurately, to ensure Partners have the best information and can understand the history of a victim.



Plan 2020-2021



2020-2021

Priority	Action	Outcome
Neglect	Identify the size of the issue, gaps in provision, Partner's responses and action to resolve.	Partners understand the environment where neglect is likely to occur, do all they can to prevent the neglect of children and vulnerable adults; and respond in an appropriate and timely way when it does occur.
Harmful Sexual Behaviours	Identify the size of the issue, gaps in provision, Partner's responses and action to resolve.	Partners understand the environment where Sexual Abuse is likely to occur and do all they can to prevent the abuse; and respond in an appropriate and timely way when it does occur.
Professional Curiosity	Review Partners provision, their shared need to include continual professional reflection of practice and ensure practitioners have the skills and opportunity to be professionally curious.	All service provider practitioners will be appropriately supervised by skilled colleagues and continually develop their professional and organisational professional curiosity
Information Sharing (to assist delivery of Safeguarding Partnership)	Deliver a new Dashboard and Website that supports and encourages the sharing and dissemination of information and data.	A new Dashboard and a new Website will support Partners shared understanding of Safeguarding and priority areas in Southend
Assurance	Develop and deliver service user and other assessments of safeguarding provision.	The Partnership will deliver a suite of audits, assessments and reviews of the performance of the Partnership; highlighting good practice and areas for improvement.



Plan 2021-2022



2021 - 2022

Priority	Action	Outcome
Voice	Review the inclusion of the voice of the service user in the design and delivery of services.	The voice of the service user will impact directly on the design and delivery of services.
Family	Review the consideration of the wider impacts (family and close relationships) of harm and exploitation	Partners will always be aware of the wider impact of individual need, and respond to those appropriately.
Training	Review the provision of safeguarding training with all Partners.	All Partners will have staff that are appropriately trained and have the opportunity to develop their skills to support their service users.
Recruitment	Ensure the selection and recruitment processes and policies for all Partners are appropriate and up to date.	All Partner roles will be advertised and the selection process completed with the service user at the heart of the decision making. All processes will comply with guidance and legislation.
Assurance	Develop and deliver service user and other assessments of safeguarding provision.	The Partnership will deliver a suite of audits, assessments and reviews of the performance of the Partnership; highlighting good practice and areas for improvement.



Plan 2022-2023



2022-2023

Priority	Action	Outcome
Recording and Reporting	Ensure policies consider Partners and information recovery	All Partners will ensure that all aspects of their work is recorded and reported in accordance with current guidance. They will also proactively manage the information and data in their possession for the benefit of the people of Southend.
Partnership	Review all Partners methodologies for managing their shared view of a vulnerable persons needs	Partners will be cognisant of each other's work, be aware of the impact of their work on Partners and collaboration will be the first choice as a way of working.
New Policy & Guidance	Ensure changes in Liberty Protection and Mental Capacity guidance is embedded and supports vulnerable people.	Partners will introduce new legislative requirements alongside Partners and the service user and staff.
Assurance	Develop and deliver service user and other assessments of safeguarding provision.	The Partnership will deliver a suite of audits, assessments and reviews of the performance of the Partnership; highlighting good practice and areas for improvement.

